

## Lamb's Tongue Chamfer – iFeature Help

Designed By: Paul Munford

Version 01 – 29nd October 2010

[www.CadSetterOut.com](http://www.CadSetterOut.com)

This Autodesk Inventor iFeature will create a stopped Chamfer with curved ends on the Arris of a stock length of timber. This help file should help you to correctly place and size the Feature.

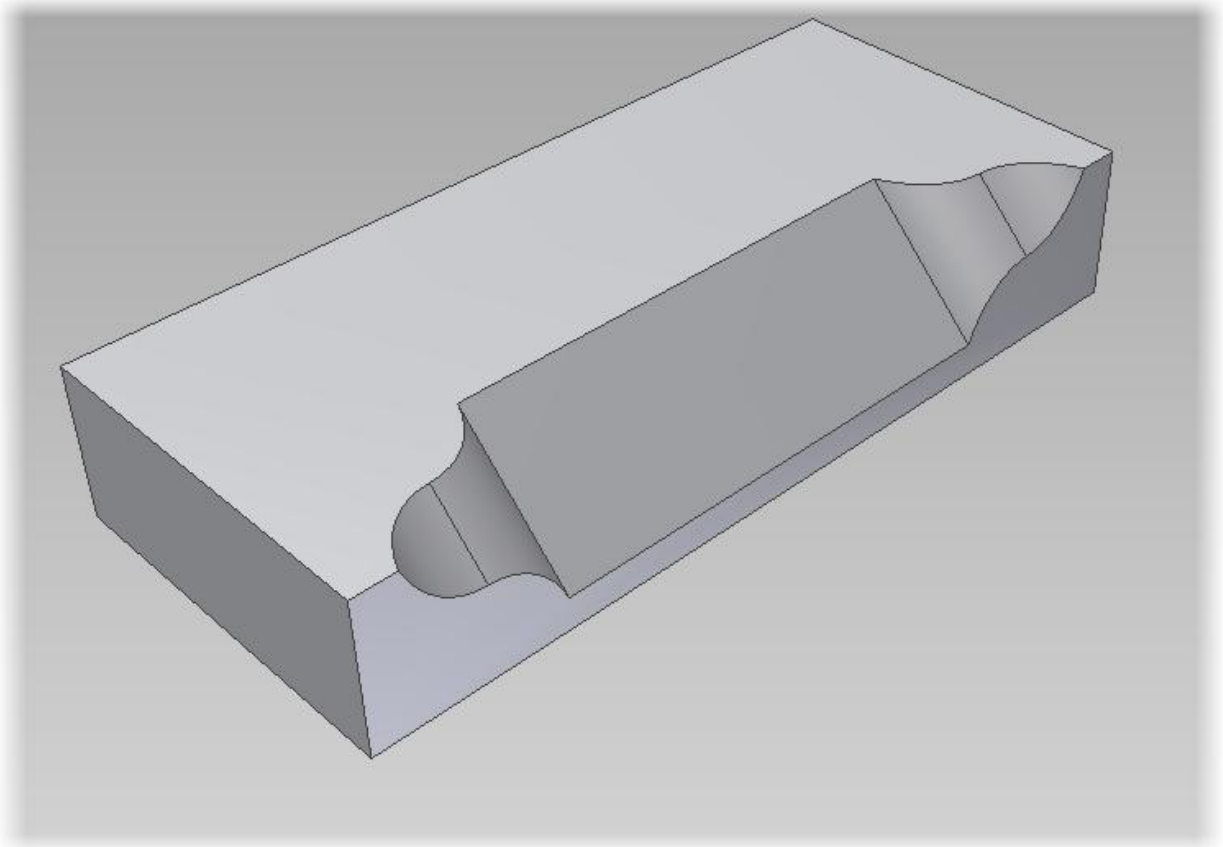


Figure 1 - The finish stopped chamfer

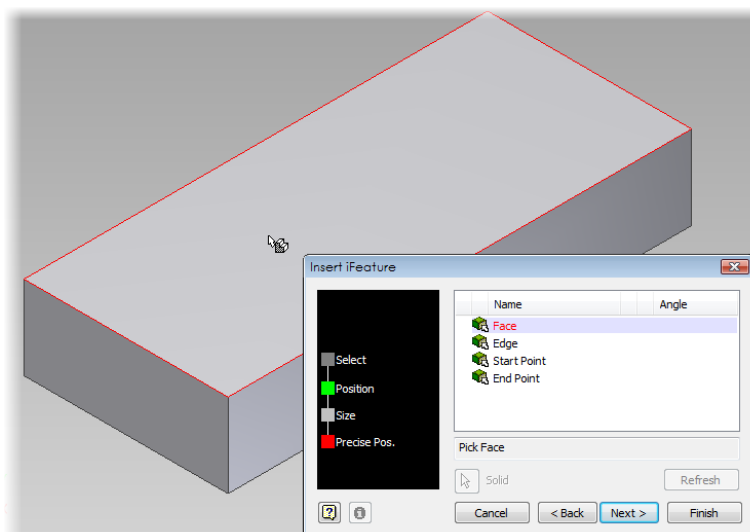
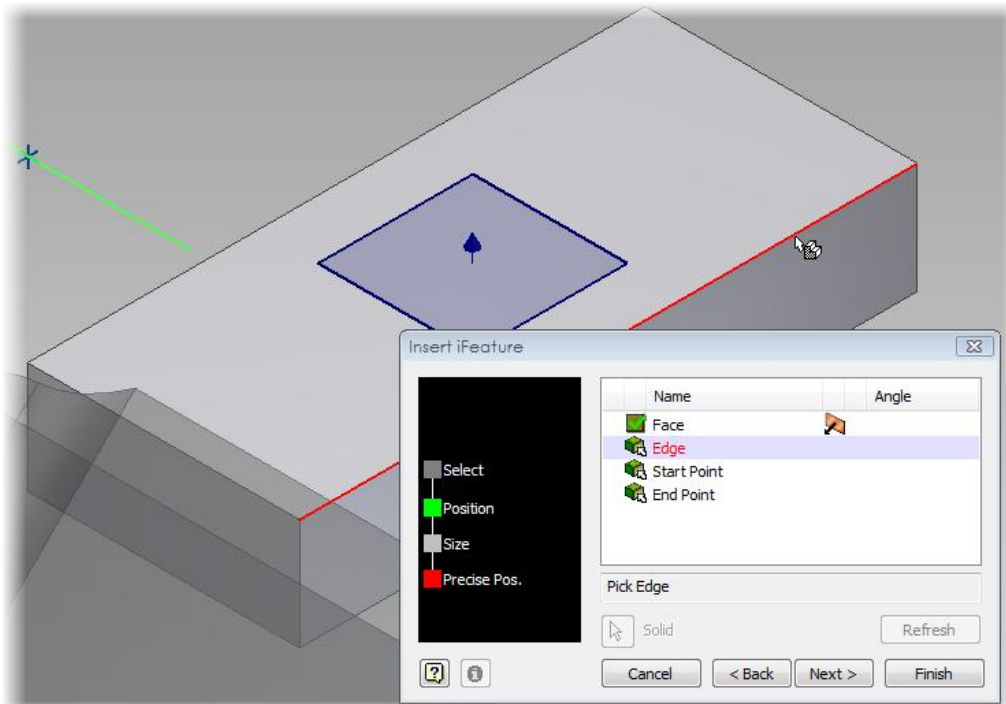
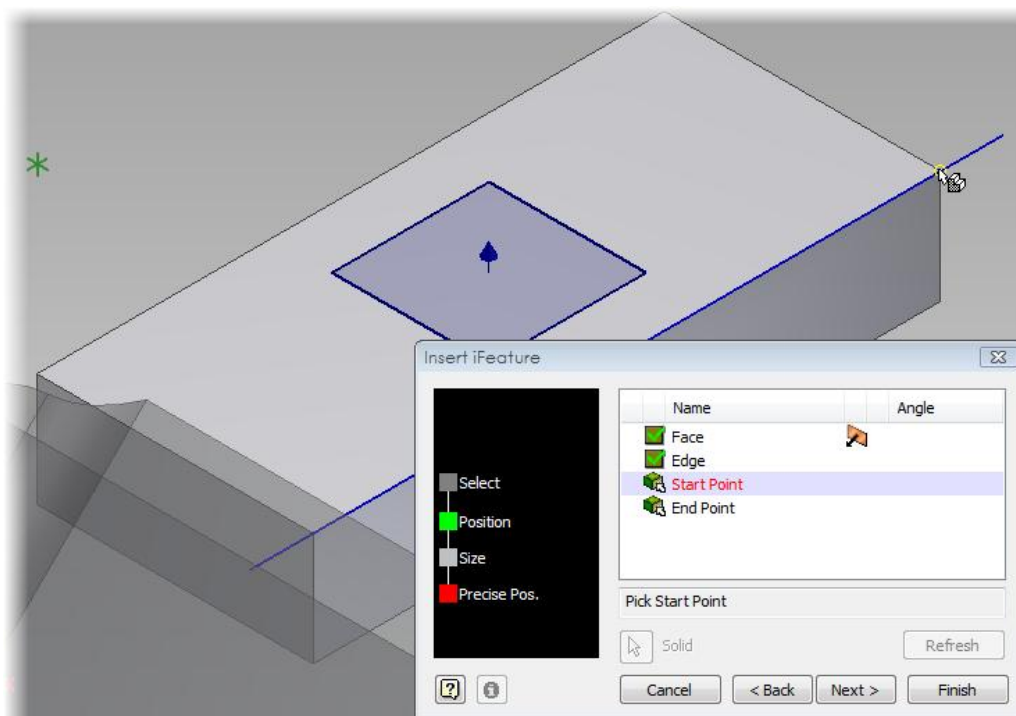


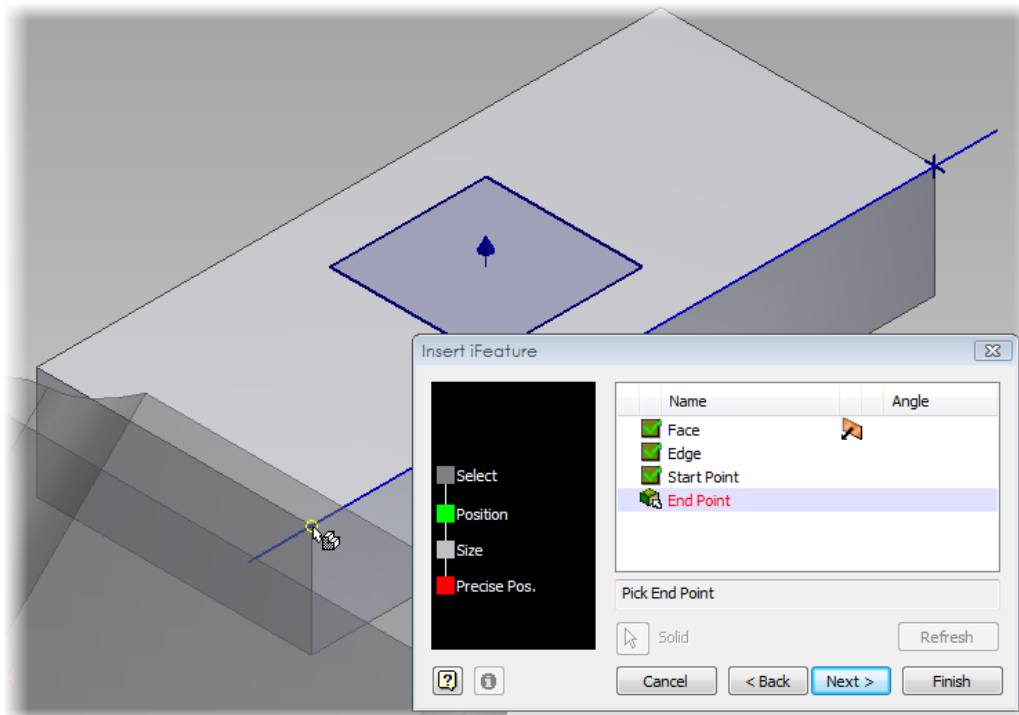
Figure 2 - Pick a Datum face



**Figure 3 - Pick a Datum edge (Arris)**

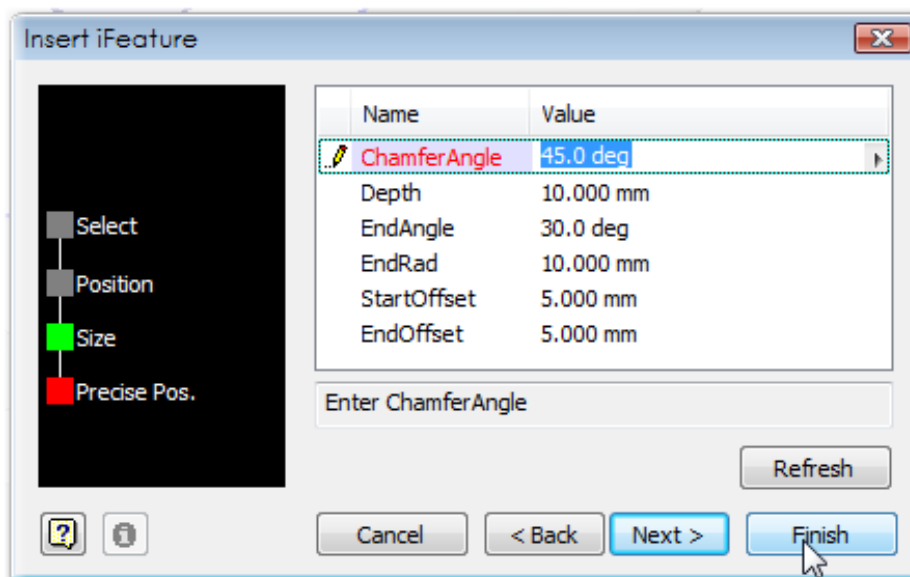


**Figure 4 - Pick a corner to start the feature**



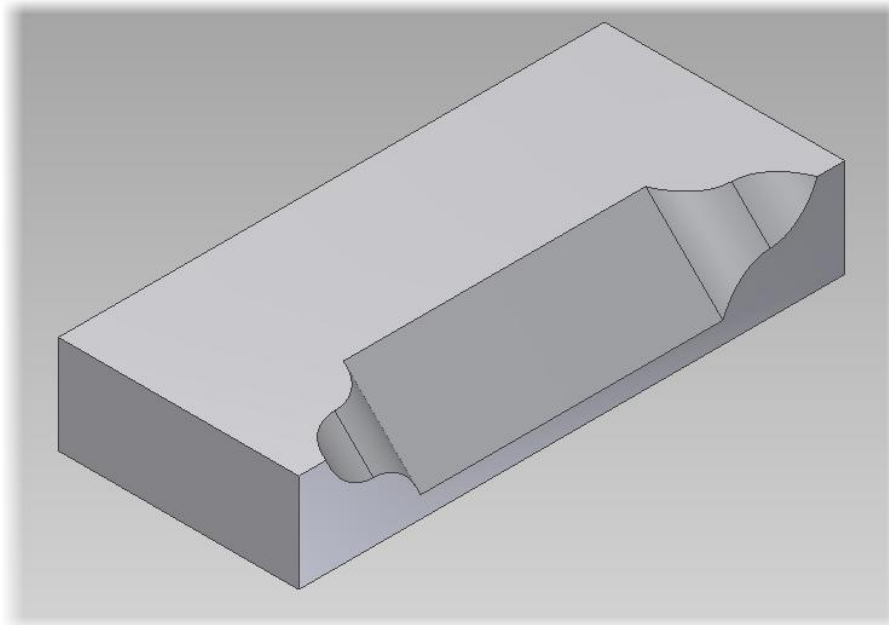
**Figure 5 - Pick a corner to end the feature**

Then click 'Next'



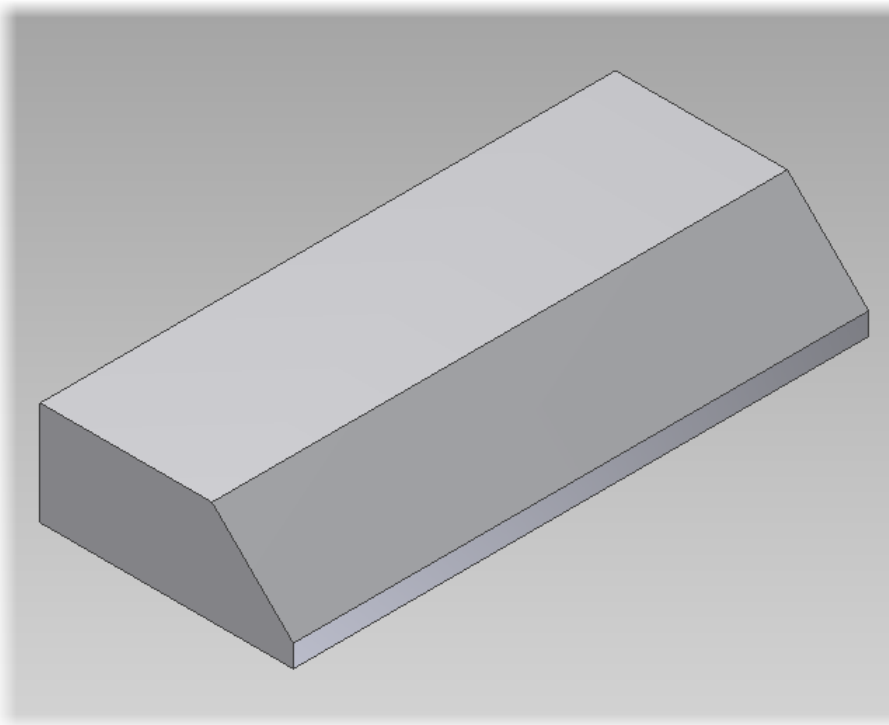
**Figure 6 - Revise values or click 'Finish'**

At this point you can revise the given values, or click 'Finish' to place the feature directly.



**Figure 7 - The Stopped Chamfer**

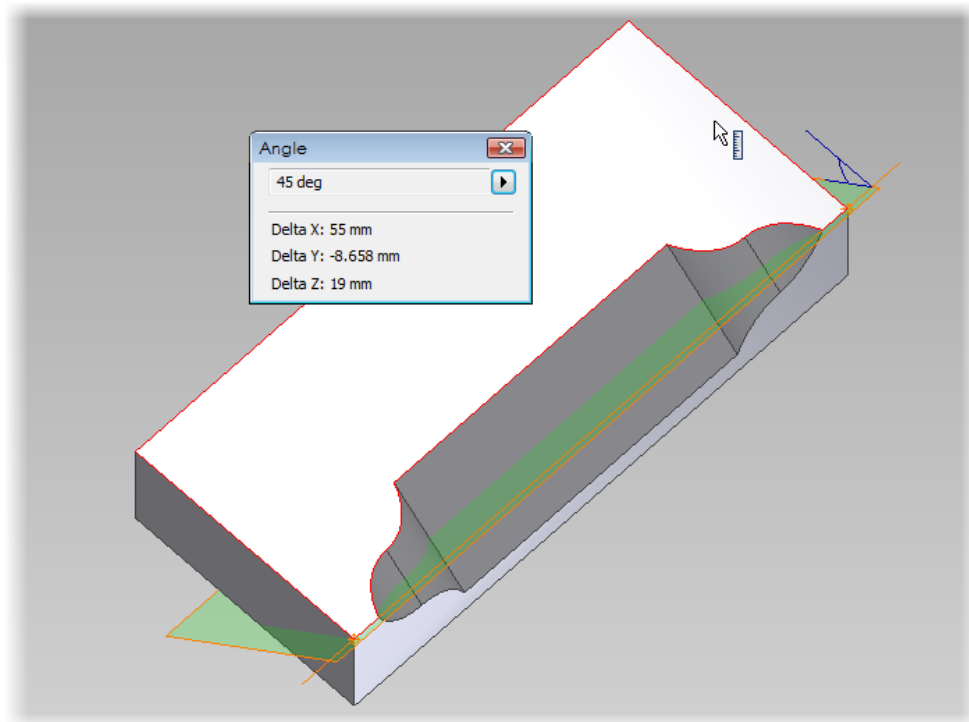
The finished feature should look like this.



**Figure 8 - Not like this!**

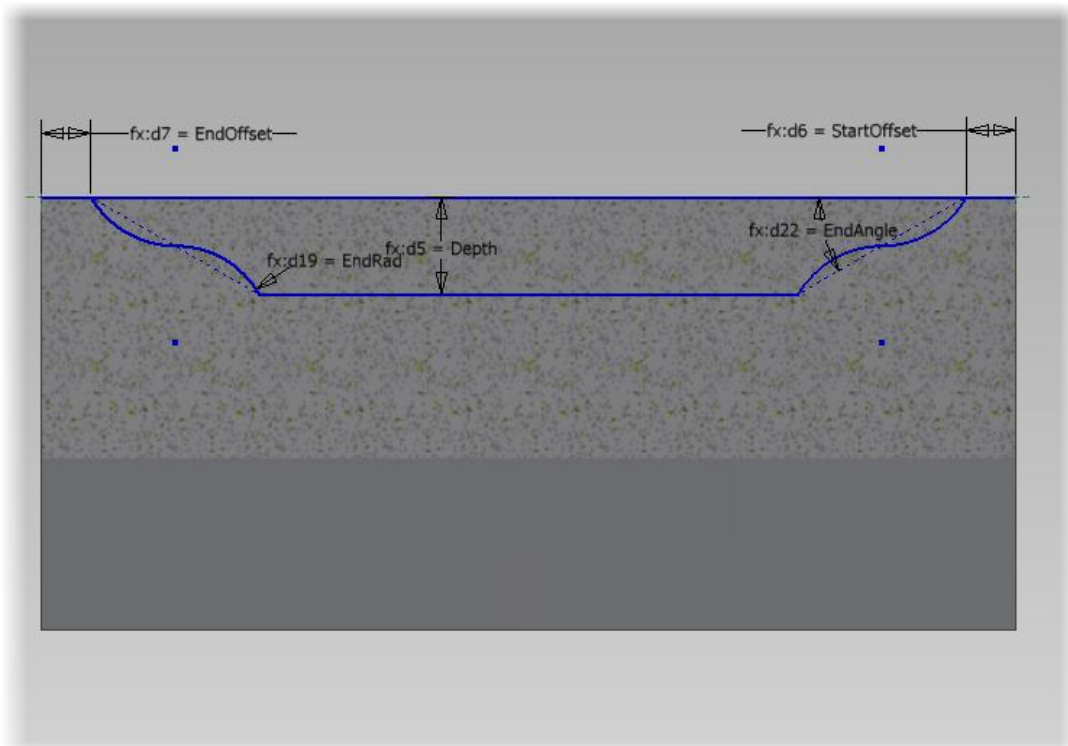
If the finished feature looks like this, try again – and this time pick the start and finish points the other way around.

## Inputs



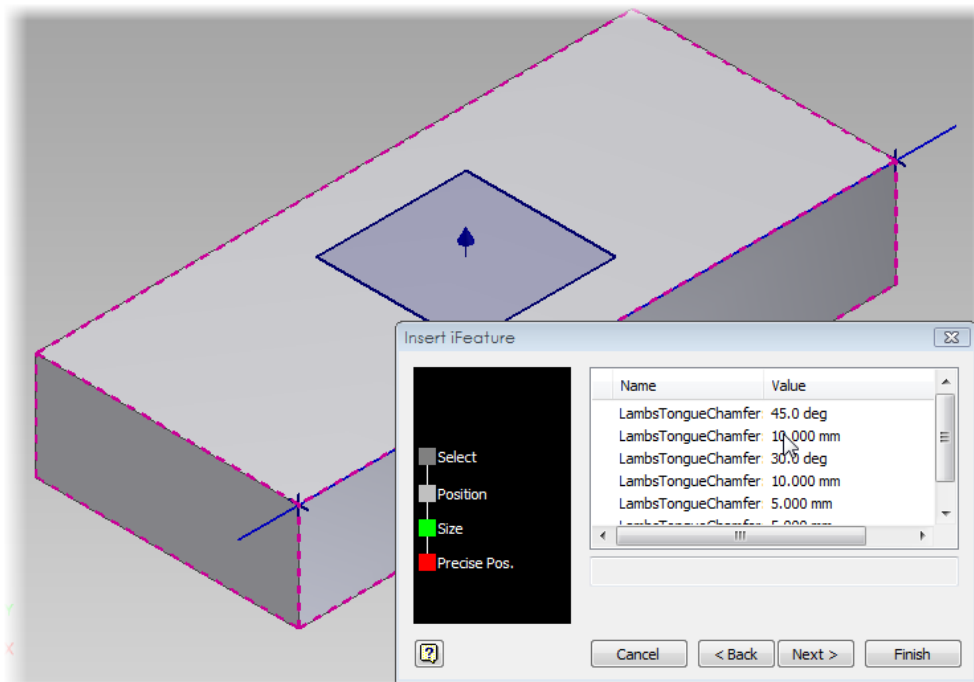
**Figure 9 - Chamfer angle**

The chamfer angle parameter sets the angle between the chamfer and the Datum face.



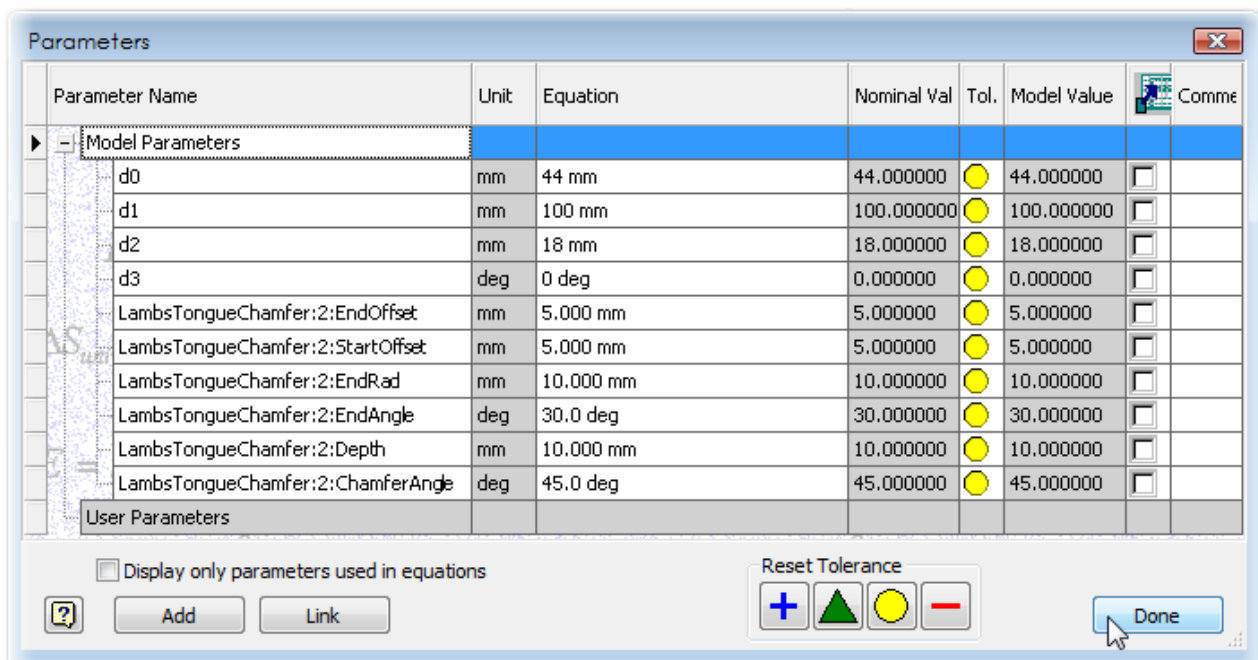
**Figure 10 - Other inputs**

The 'Depth' parameter is the depth of the Chamfer, from the chamfered face to the Datum Edge. The 'EndMajorRad' parameter controls the inner curve at both ends of the stopped chamfer. The 'EndMinorRad' parameter controls the outer curve at both ends of the stopped chamfer. The 'StartOffset' and 'EndOffset' Parameters set the distance from the corner of the stock to the beginning of the Lamb's tongue.



**Figure 11 - Edit the iFeature**

You can edit the iFeature at any time by double clicking on its node in the part feature browser.

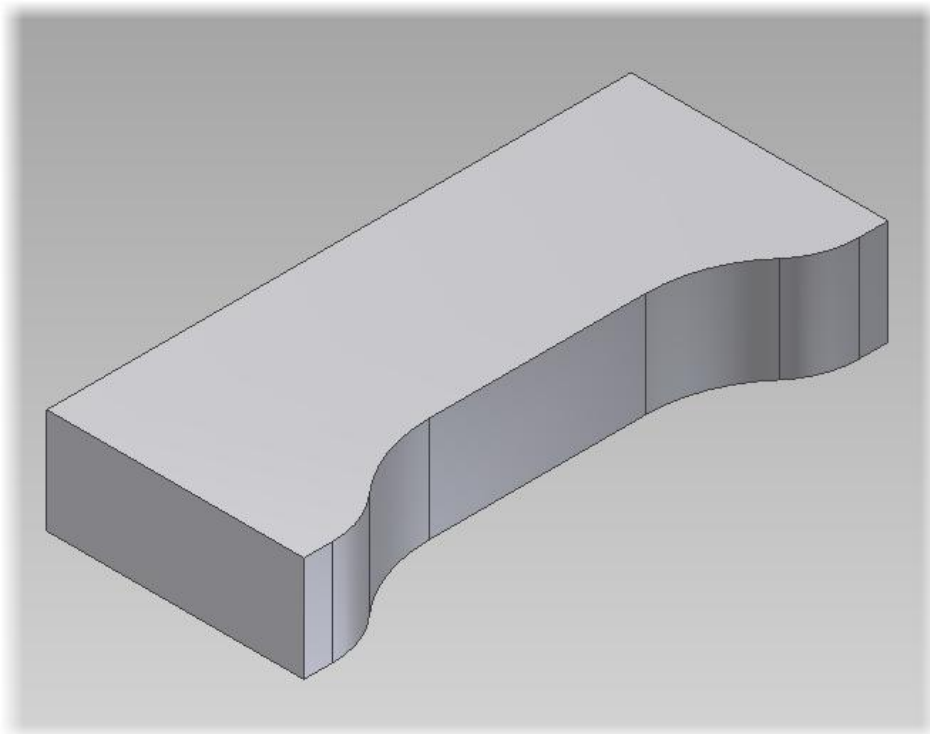


**Figure 12 - iFeature parameters**

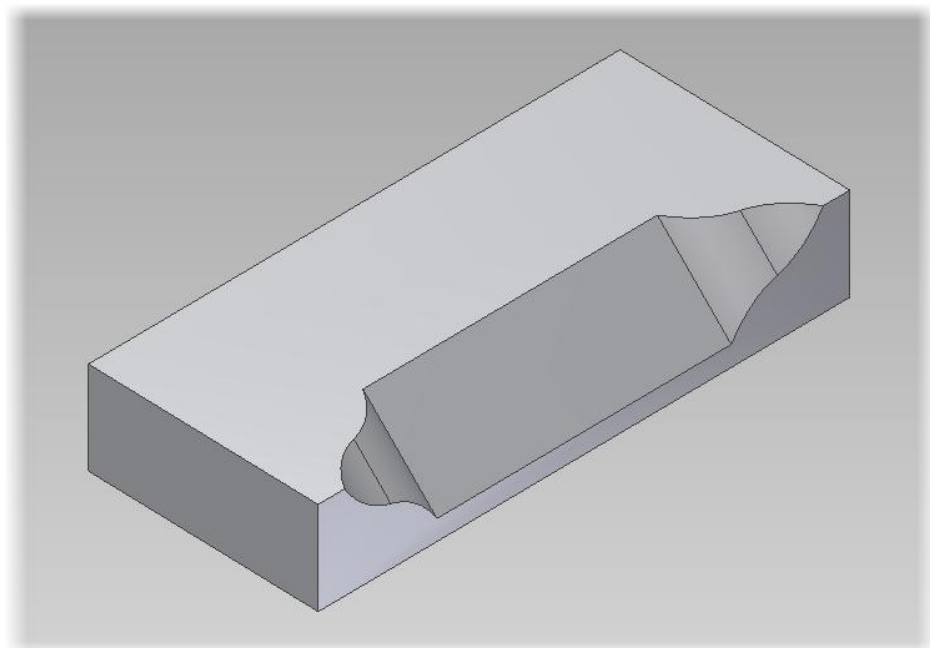
Or you can edit the values directly in the Parameters manager.

### Variations

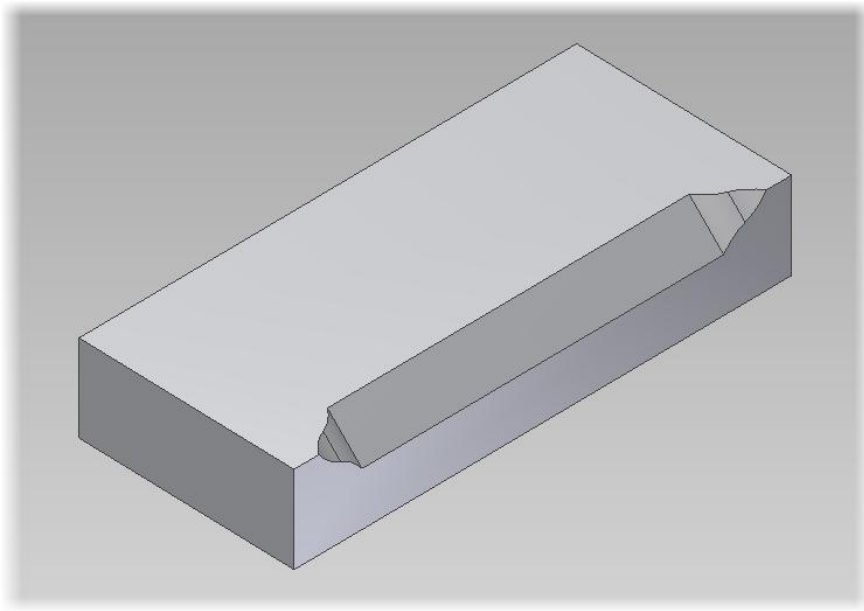
Examples of the kind of profile stopped Chamfers you can create with this iFeature.



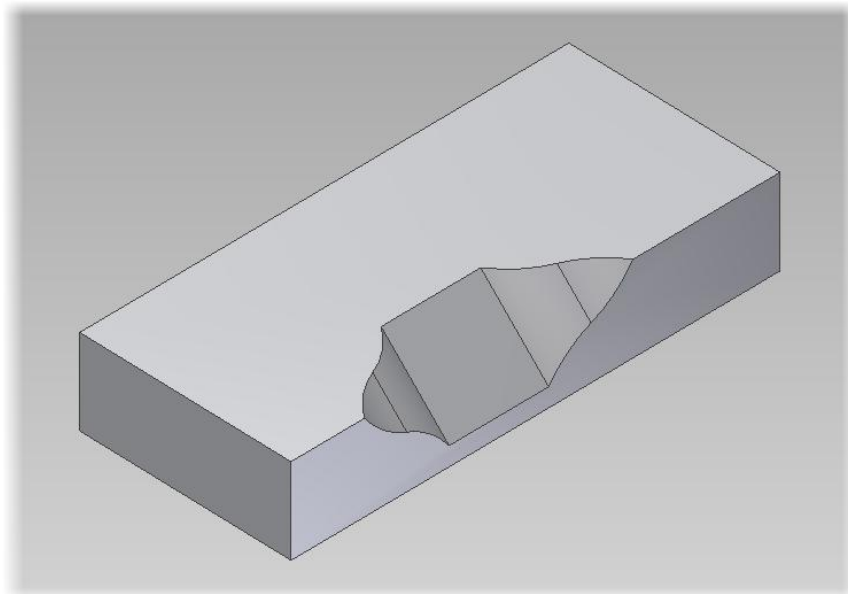
**Figure 13 - 'ChamferAngle' = 0 degrees**



**Figure 14 - 'EndRad' = 15mm**



**Figure 15 - 'Depth' = 5mm**



**Figure 16 - 'StartOffset' = 15mm, 'EndOffset' = 30mm**